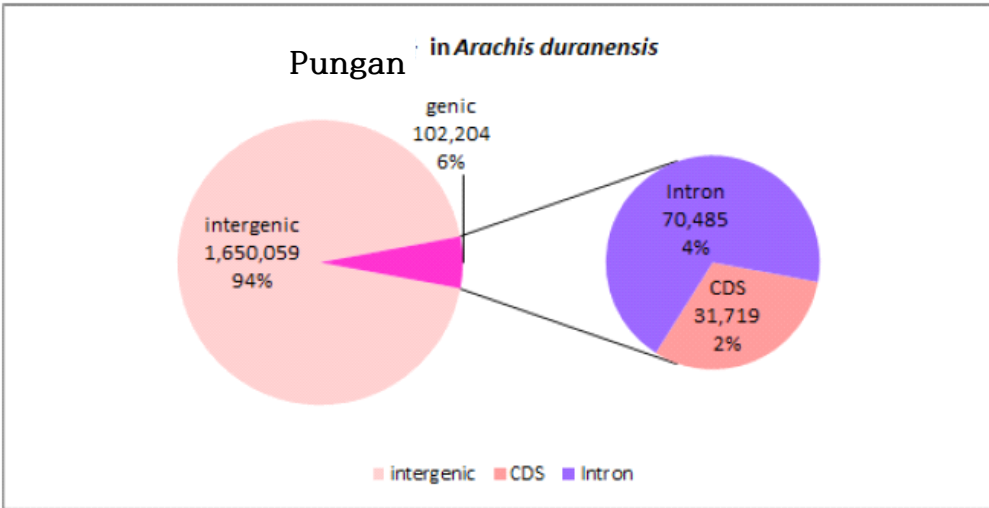
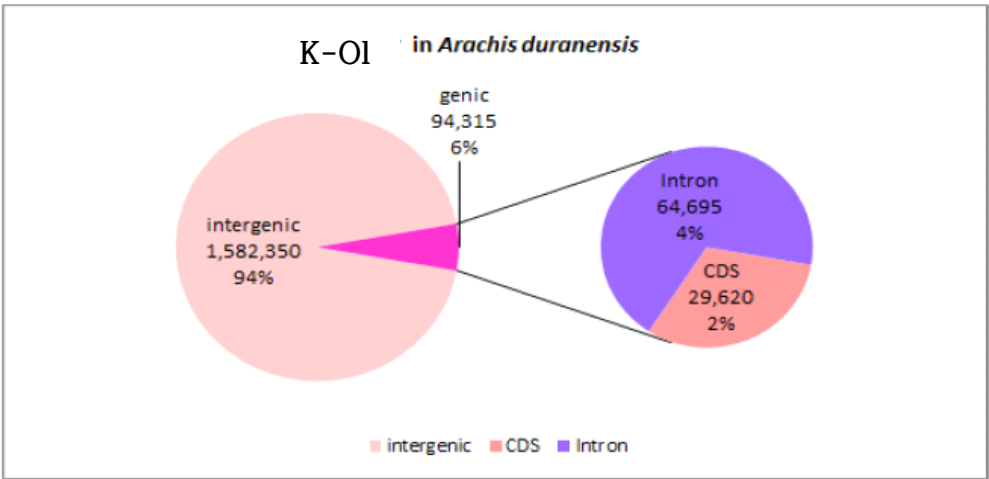


Supplementary Table S1. SNP detection in chromosome of *Arachis duranensis*

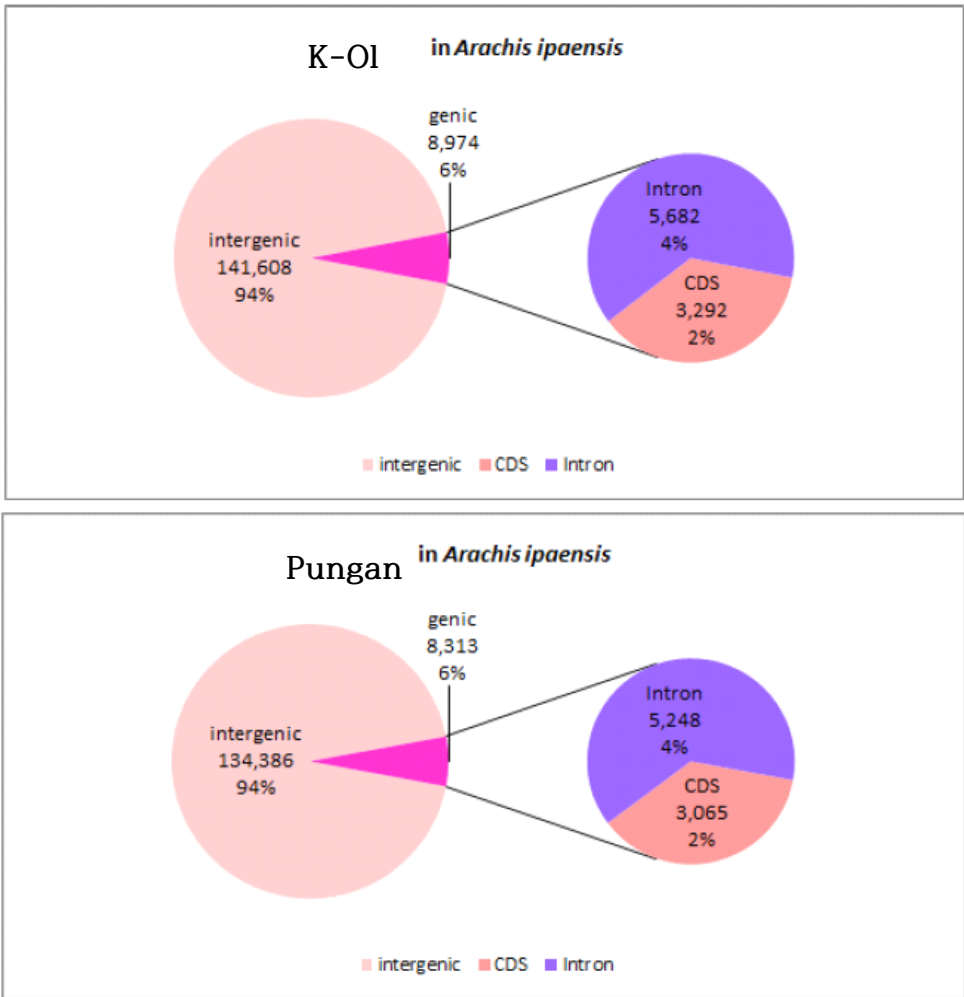
Chr.	K-OI		Pungan	
	No. of Homozygous	No. of Heterozygous	No. of Homozygous	No. of Heterozygous
Aradu.A01	157,007	7,913	148,568	7,786
Aradu.A02	139,356	6,457	131,942	6,198
Aradu.A03	272,114	8,693	259,689	8,194
Aradu.A04	204,826	8,357	195,719	7,693
Aradu.A05	182,648	8,242	174,001	7,731
Aradu.A06	200,704	7,054	200,823	7,111
Aradu.A07	146,789	5,078	139,928	4,807
Aradu.A08	117,051	3,308	108,705	3,204
Aradu.A09	168,134	8,488	160,248	8,158
Aradu.A10	154,526	7,820	148,160	7,508
Scaffolds	22,476	2,640	22,125	2,549
Total	1,765,631	74,050	1,689,908	70,939

Supplementary Table S2. SNP detection in chromosome of *Arachis ipaensis*

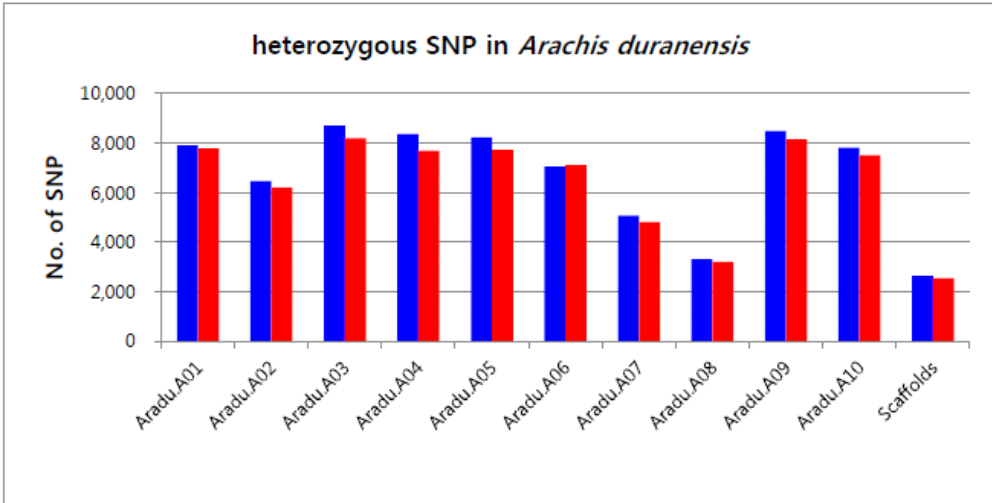
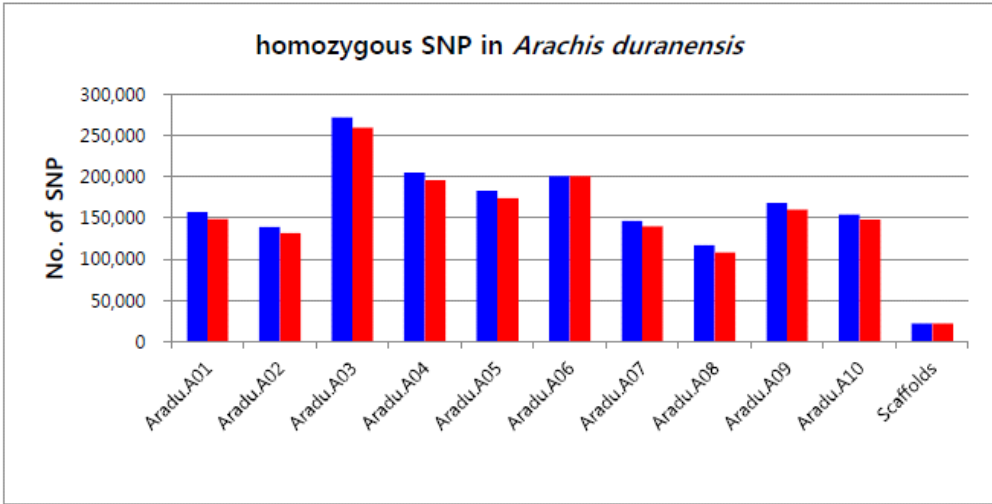
Chr.	K-OI		Pungan	
	No. of Homozygous	No. of Heterozygous	No. of Homozygous	No. of Heterozygous
Araip.B01	16,977	7,738	13,623	7,370
Araip.B02	13,505	8,212	12,458	7,822
Araip.B03	15,325	9,218	13,508	8,873
Araip.B04	14,950	9,665	14,361	8,986
Araip.B05	17,381	8,912	16,511	8,630
Araip.B06	15,179	8,740	17,482	8,425
Araip.B07	13,543	7,733	13,163	7,506
Araip.B08	13,554	7,644	12,796	7,429
Araip.B09	15,810	9,226	15,085	8,888
Araip.B10	14,229	7,836	13,596	7,598
Scaffolds	507	963	497	968
Total	150,960	85,887	143,080	82,495



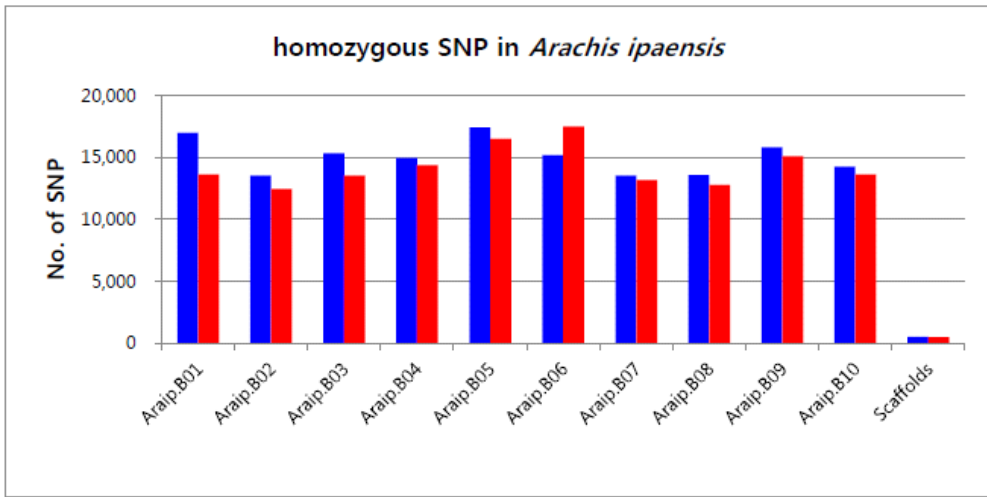
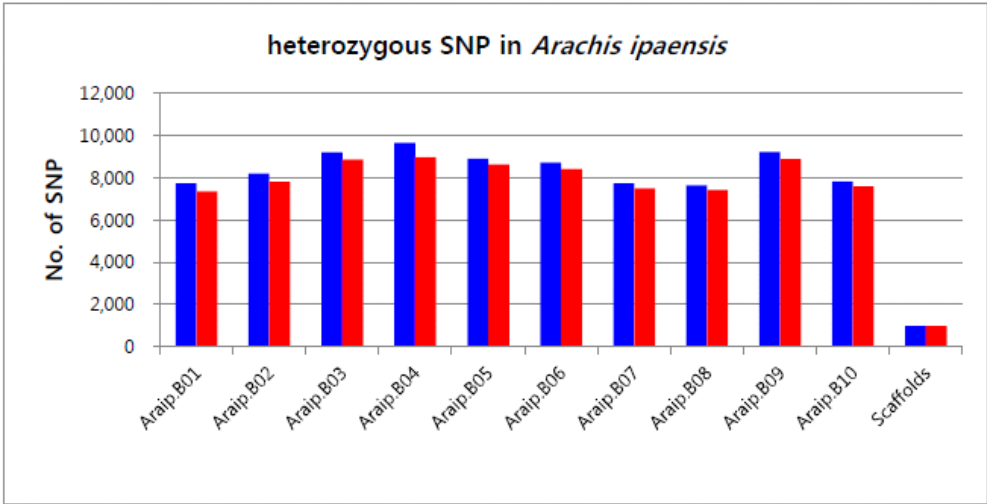
Supplementary Fig. S1. Number of homozygous SNP in genic or intergenic region in *Arachis duranensis* of K-OI and Pungan.



Supplementary Fig. S2. Number of homozygous SNP in genic or intergenic region in *Arachis ipaensis* of K-OI and Pungan.



Supplementary Fig. S3. Number of homozygous and heterozygous SNP across all chromosomes in *Arachis duranensis*; K-OI (blue bar) and Pungan (red bar).



Supplementary Fig. S4. Number of homozygous and heterozygous SNP across all chromosomes in *Arachis ipaensis*; K-OI (blue bar) and Pungan (red bar).