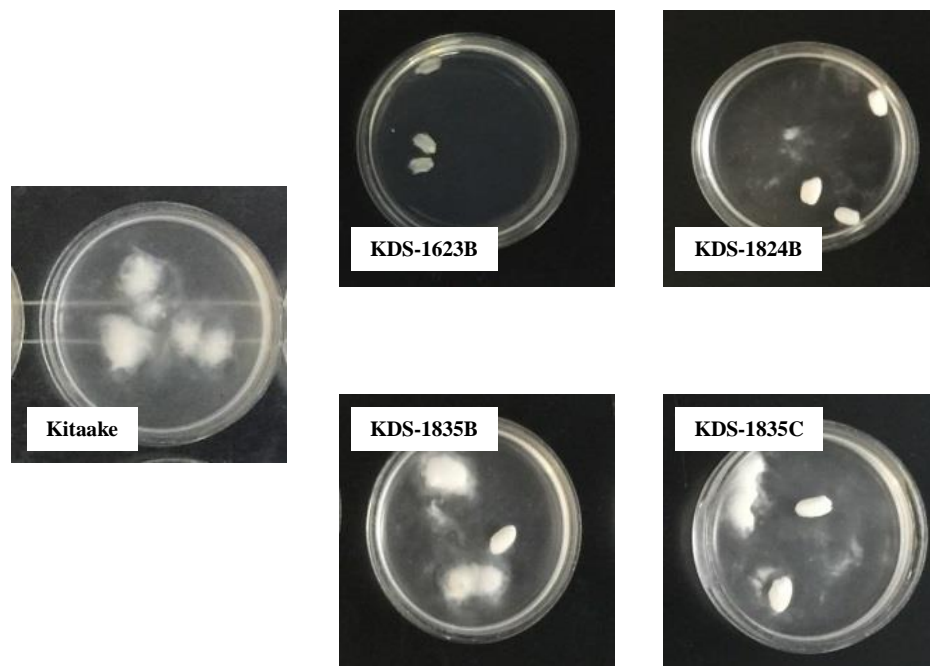


Supplementary Fig. S1. ASV phenotyping of F_2 seeds from (a) KDS-1824B/Kitaake and (b) Kitaake/KDS-1824B. Milled grains were placed in 1 mL of 1.7% KOH and incubated at 30°C for 23 hours and then evaluated qualitatively for degree of spreading/digestion.



Supplementary Fig. S2. Modified ASV assay. Kitaake (wild type), KDS-1824B, KDS-1835B, and KDS-1835C a. Three milled rice grains from wild type and three M₂ generation mutants were incubated in 1.7% KOH at 20°C for 23 hours.