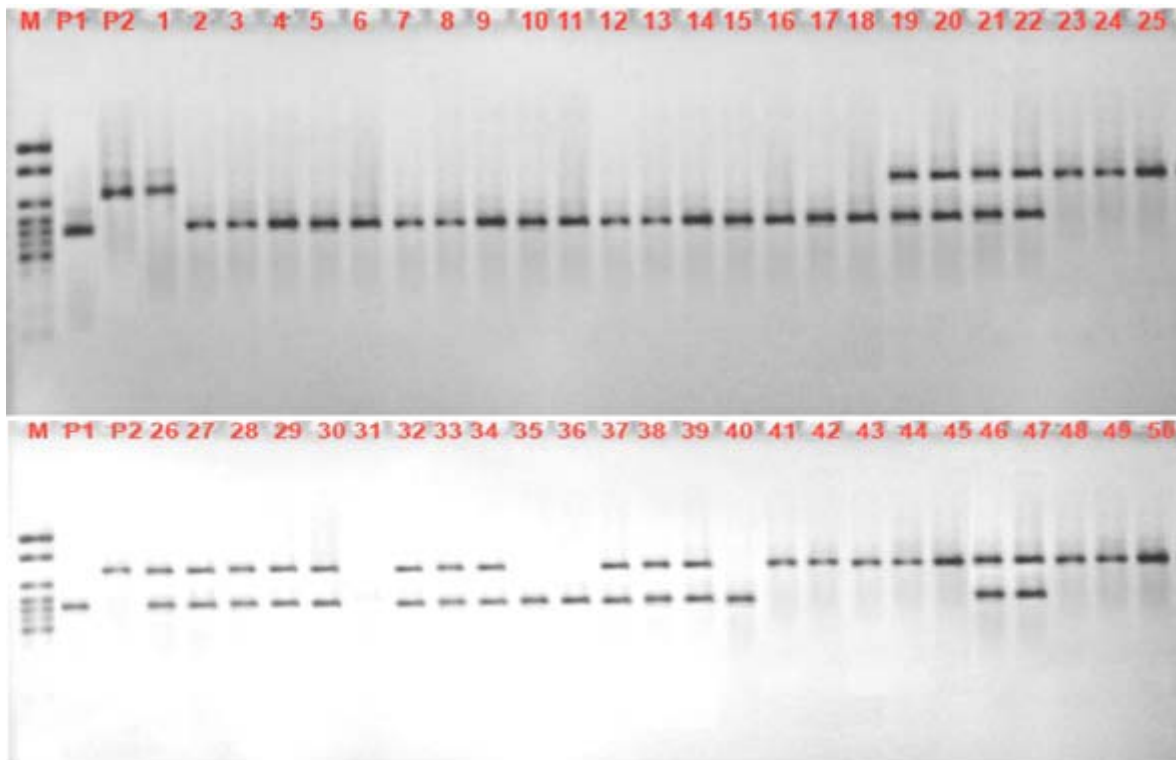
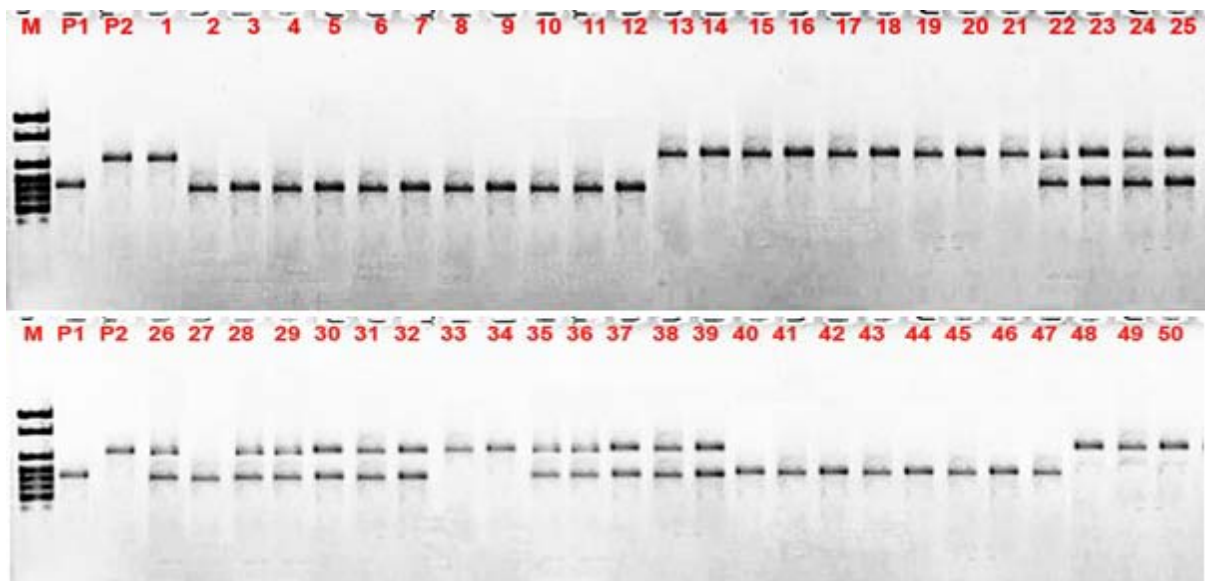


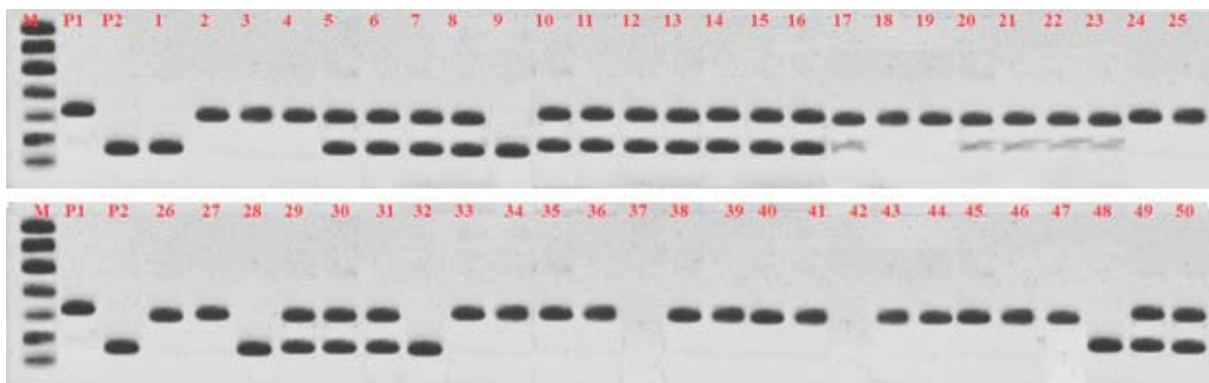
Supplementary Fig. 1. PCR products at the locus RM3735 on chromosome 4 were detected in BC₃ population of OM5930/N22//4*OM5930.



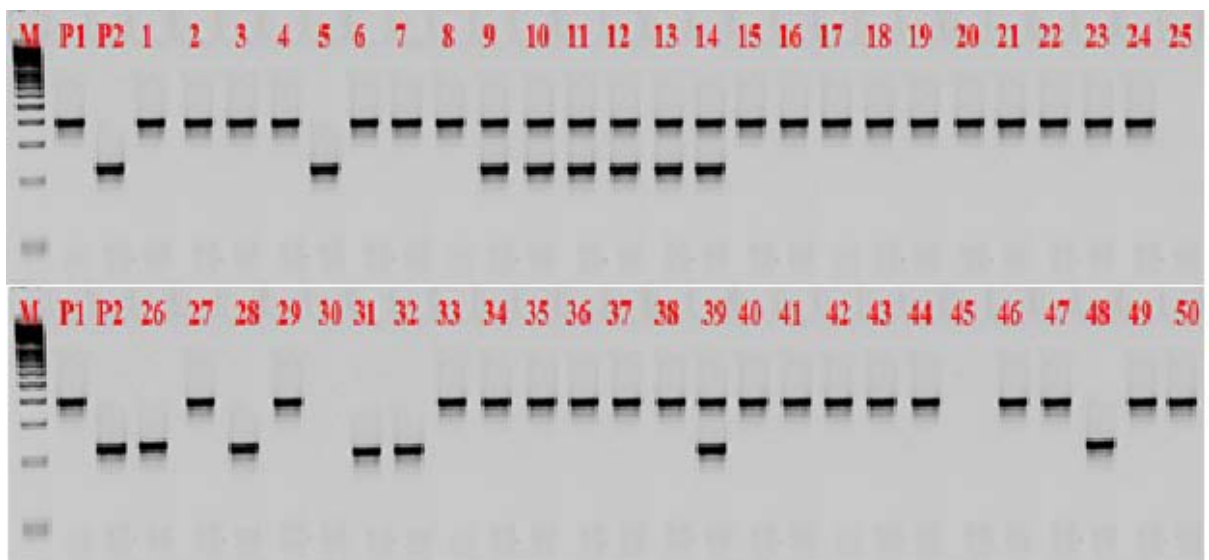
Supplementary Fig. 2. PCR products at the locus RM3735 on chromosome 4 were detected in BC₃ population of Gayabeyo/N22//4*Gayabyeo.



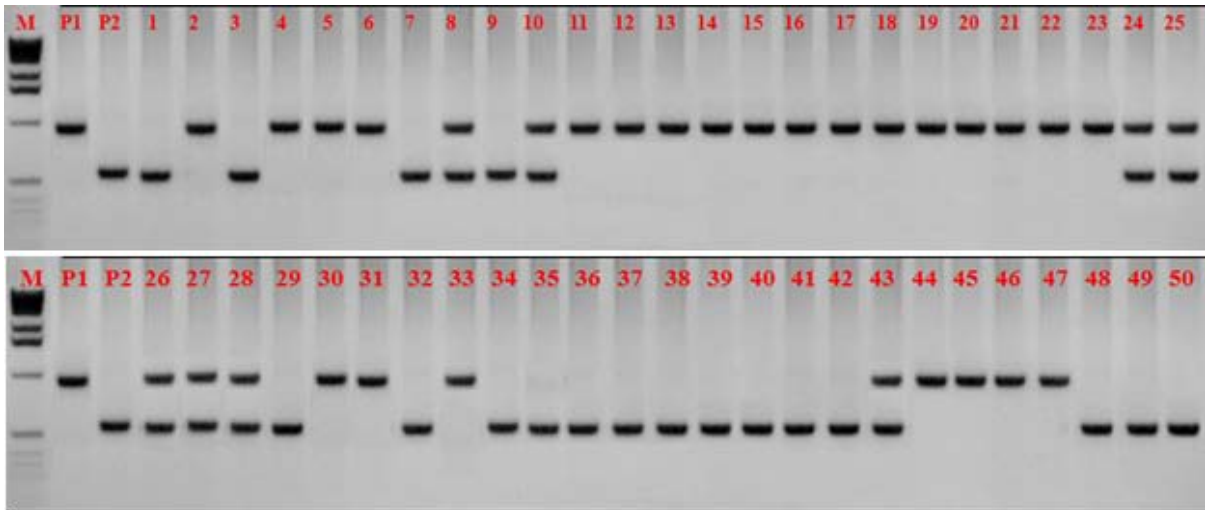
Supplementary Fig. 3. PCR products at the locus RM3687 on chromosome 4 were detected in BC₃ populations of OM5930/N22//4*OM5930.



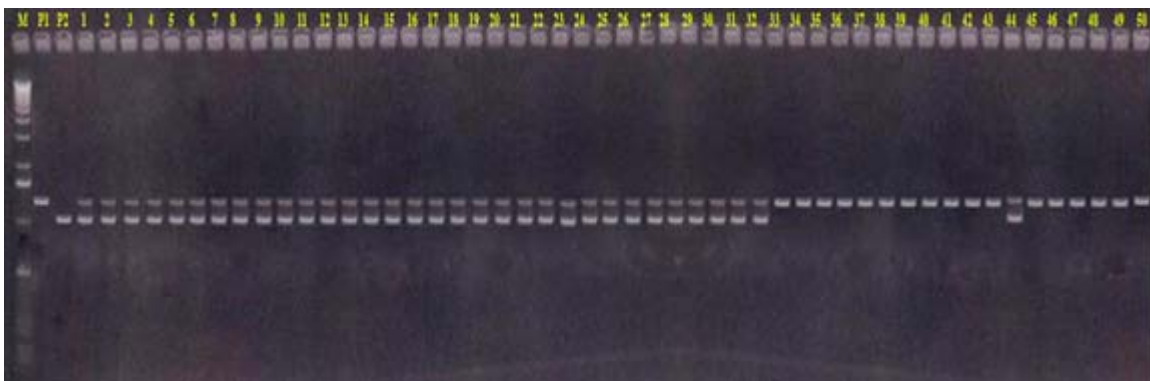
Supplementary Fig. 4. PCR products at the locus RM3687 on chromosome 4 were detected in BC₃ population of Gayabeyo/N22//4Gayabyeo.



Supplementary Fig. 5. PCR products at the locus RM3471 (200-215 bp) on chromosome 4 were detected in BC₄F₂ population of Gayabeyo/N22//4*Gayabyeo.



Supplementary Fig. 6. PCR products at the locus RM3586 on chromosome 3 in BC₂F₂ population of AS996/N22//4*AS996.



Supplementary Fig. 7. PCR products at the locus RM3586 on chromosome 3 in BC₂F₂ population of AS996/Dular//4*AS996.



Supplementary Fig. 8. PCR products at the locus RM160 on chromosome 3 in BC₂F₂ of AS996/N22//4*AS996.



Supplementary Fig. 9. PCR products at the locus RM160 on chromosome 3 in BC₄F₂ population of AS996/Dular//4*AS996.

